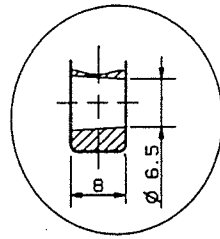
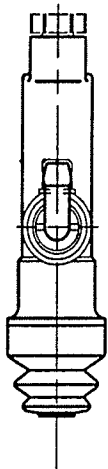


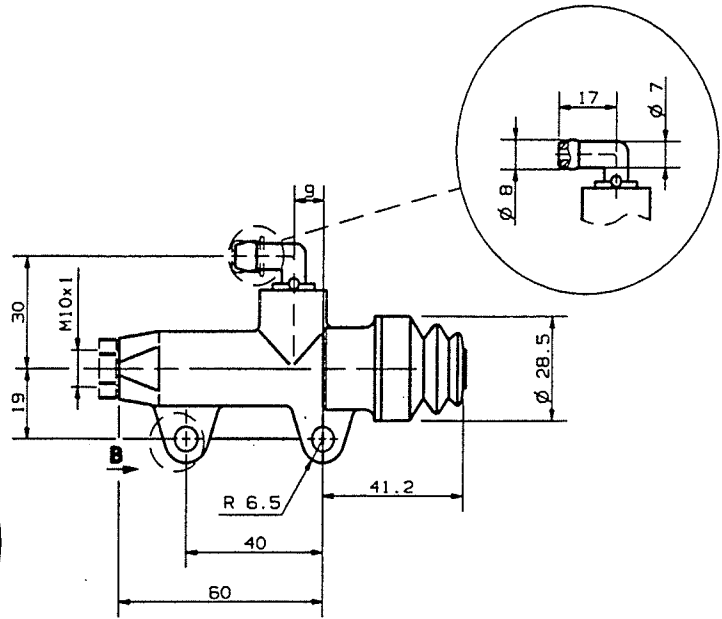


# REAR MASTER CYLINDER

PS 11 C  
10.4776.51



Cutaway view of clamp detail from B view.



## DESCRIPTION

Rear master cylinder without push rod.  
Construction Material: Aluminium Alloy.  
Operating fluid: brake fluid DOT4.  
Pipe fitting can be oriented in the desired position.

Master cylinder BODY color: Gold Anodic Oxidation.

## TECHNICAL CHARACTERISTICS

Piston diameter: 11.0 mm  
Piston and push rod clearance with assembled master cylinder: 1.0 mm  
Weight: 0.088 Kg

## AVAILABLE SPARE PARTS

SPARE PARTS CODE	PIPE FITTING	BOOT
10.4776.51	210.3127.20	210.3741.20