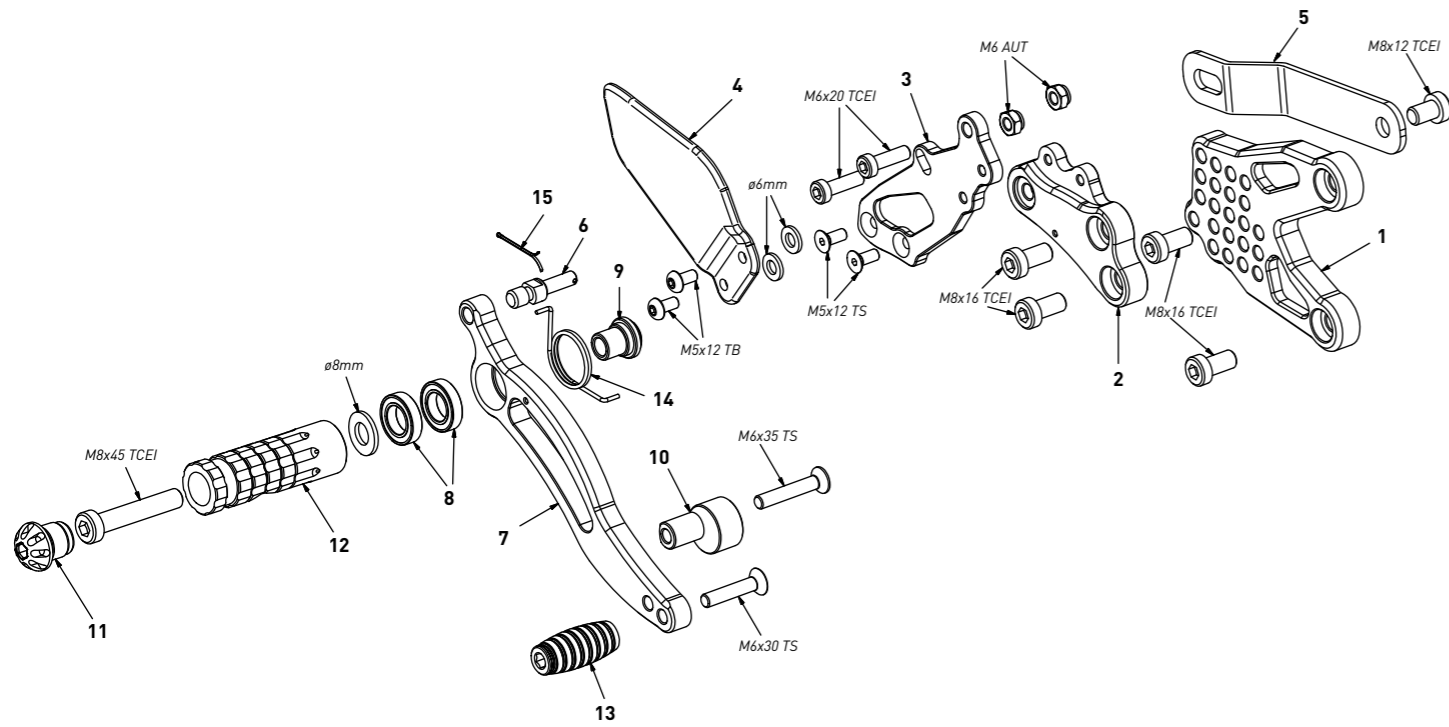


code B001 - BMW S 1000 RR/S 1000 R '08/'14 (normal shifting)

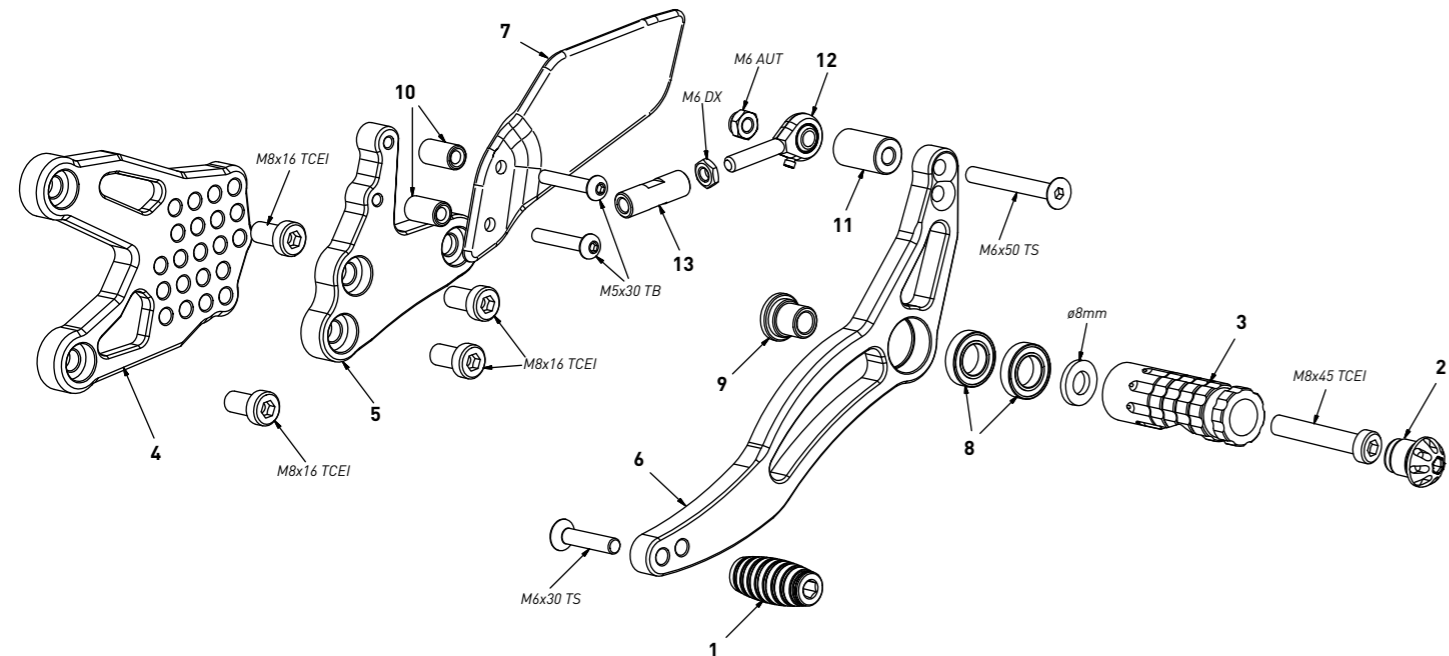
brake side - lato freno



code B001 - brake side - lato freno		
n°	description - descrizione	code
1	back plate - arretratore	AR_012
2	plate - piastra	PS_006T
3	pump support - portapompa	PP_012
4	heel plate - battitacco	BT_017
5	exhaust bracket - staffa scarico	SS_005
6	brake pin - perno freno	PF_008
7	brake lever - leva freno	FN_010
8	bearing - cuscinetto	CS_002
9	bush - boccola	BC_002
10	registro - adjuster	BC_004
11	cap - tappo	PG00_BK
12	footpeg - poggiatesta	PG03
13	frontpeg - puntalino	PU_001
14	spring - molla	MO_002
15	forelock - coppiglia	FN001

code B001 - BMW S 1000 RR/S 1000 R '08/'14 (normal shifting)

gear side - lato cambio



code B001 - gear side - lato cambio		
n°	description - descrizione	code
1	frontpeg - puntalino	PU_001
2	cap - tappo	PG00_BK
3	footpeg - poggiatesta	PG03
4	back plate - arretratore	AR_011
5	plate - piastra	PS_027T
6	gear lever - leva cambio	LC_014
7	heel plate - battitacco	BT_018
8	bearing - cuscinetto	CS_002
9	bush - boccola	BC_002
10	17mm spacer - spessore 17mm	SP_014
11	gear spacer - distanziale	DC_016
12	RH uniball - uniball DX	RH01_DX
13	gear rod - asta cambio	R021_30D