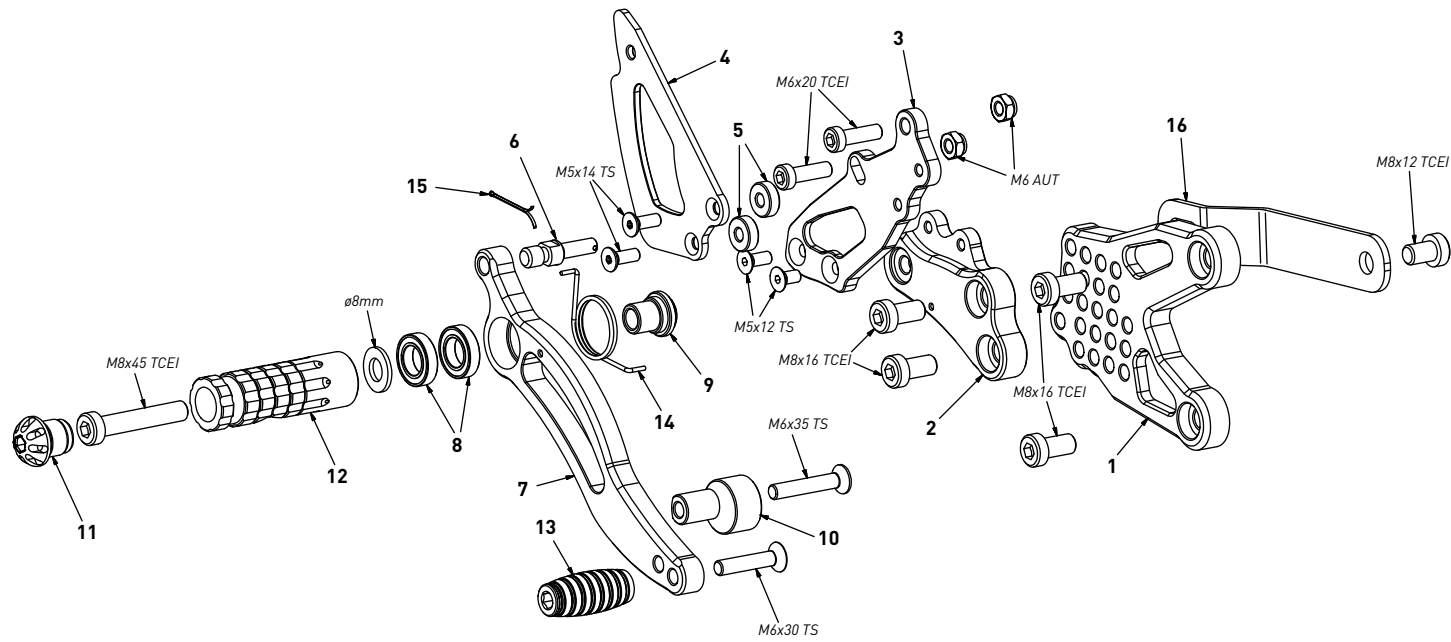


code B001R - BMW S 1000 RR/S 1000 R '08/'14 (reverse shifting)

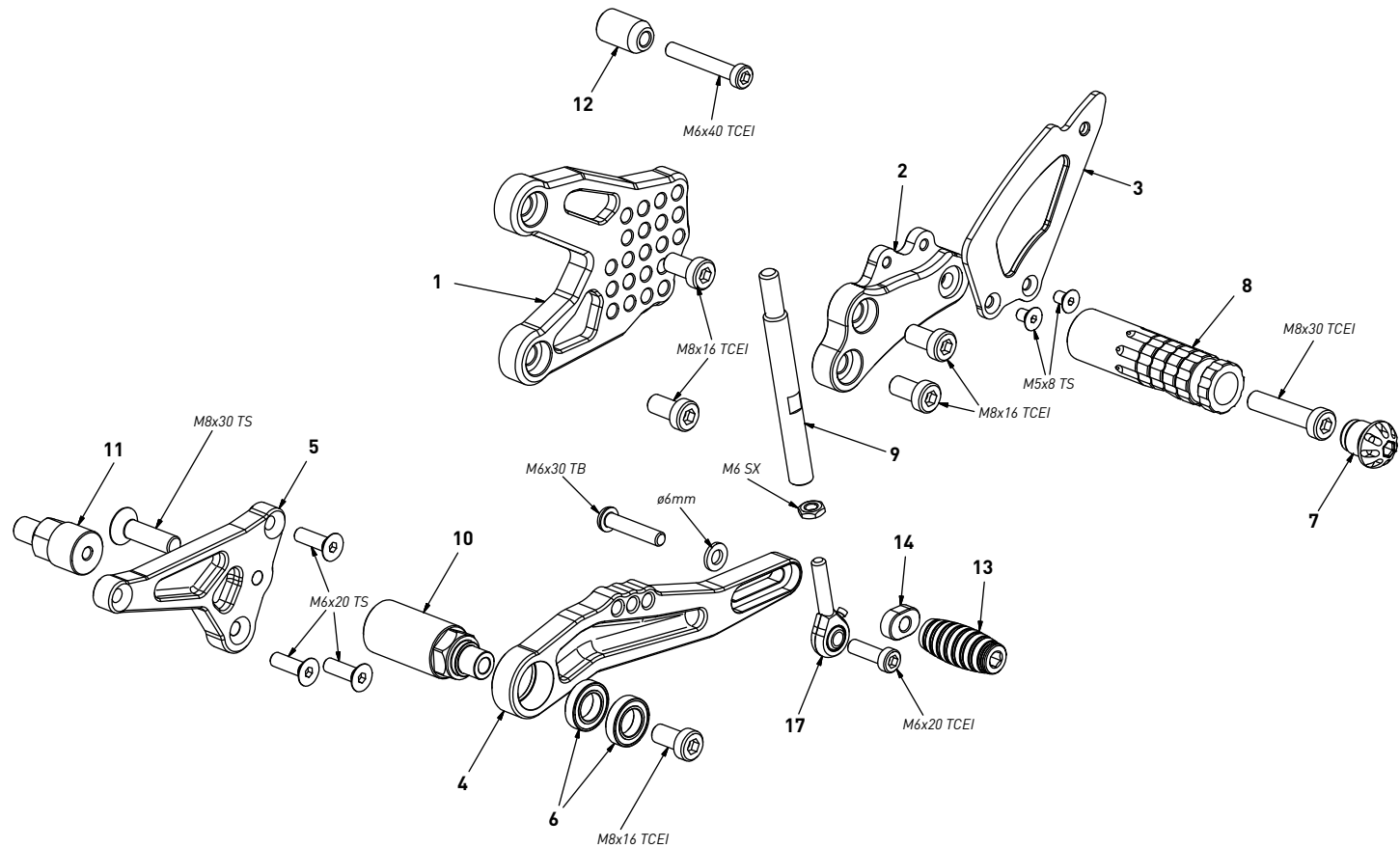
brake side - lato freno



code B001R - brake side - lato freno		
n°	description - descrizione	code
1	back plate - arretratore	AR_012
2	plate - piastra	PS_006T
3	pump support - portapompa	PP_012
4	heel plate - battitacco	BT_001
5	5mm spacer - spessore 5mm	SP_001
6	brake pin - perno freno	PF_008
7	brake lever - leva freno	FN_010
8	bearing - cuscinetto	CS_002
9	bush - boccola	BC_002
10	registro - adjuster	BC_004
11	cap - tappo	PG00_BK
12	footpeg - poggiatesta	PG03
13	frontpeg - puntalino	PU_001
14	spring - molla	MO_002
15	forelock - coppiglia	FN001
16	exhaust bracket - staffa scarico	SS_005

code B001R - BMW S 1000 RR/S 1000 R '08/'14 (reverse shifting)

gear side - lato cambio



code B001R - gear side - lato cambio		
n°	description - descrizione	code
1	back plate - arretratore	AR_011
2	plate - piastra	PS_005T
3	heel plate - battitacco	BT_002
4	gear lever - leva cambio	LC_011
5	spacer bracket - supporto	LC_012
6	bearing - cuscinetto	CS_002
7	cap - tappo	PG00_BK
8	footpeg - poggiatesta	PG04
9	gear rod - asta cambio	AC_004
10	gear spacer - distanziale	DC_001
11	bracket spacer - distanziale	DC_014
12	spacer - distanziale	DC_018
13	frontpeg - puntalino	PU_001
14	slider bush - tassello	PU_006
15	LH uniball - uniball SX	RH01_SX