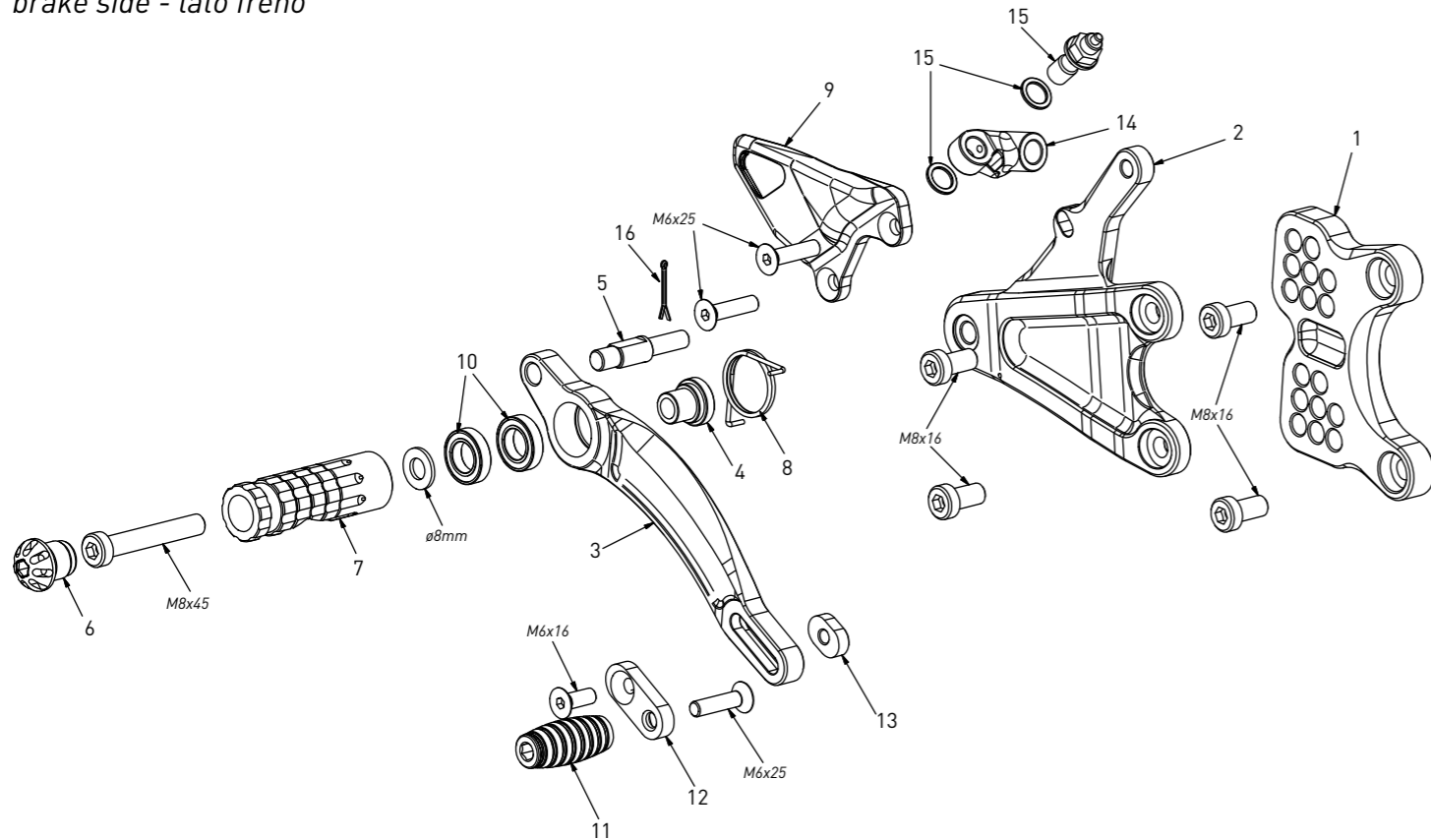


code H016 - Honda CBR 1000 RR-R Fireblade '20/'22 "Standard"

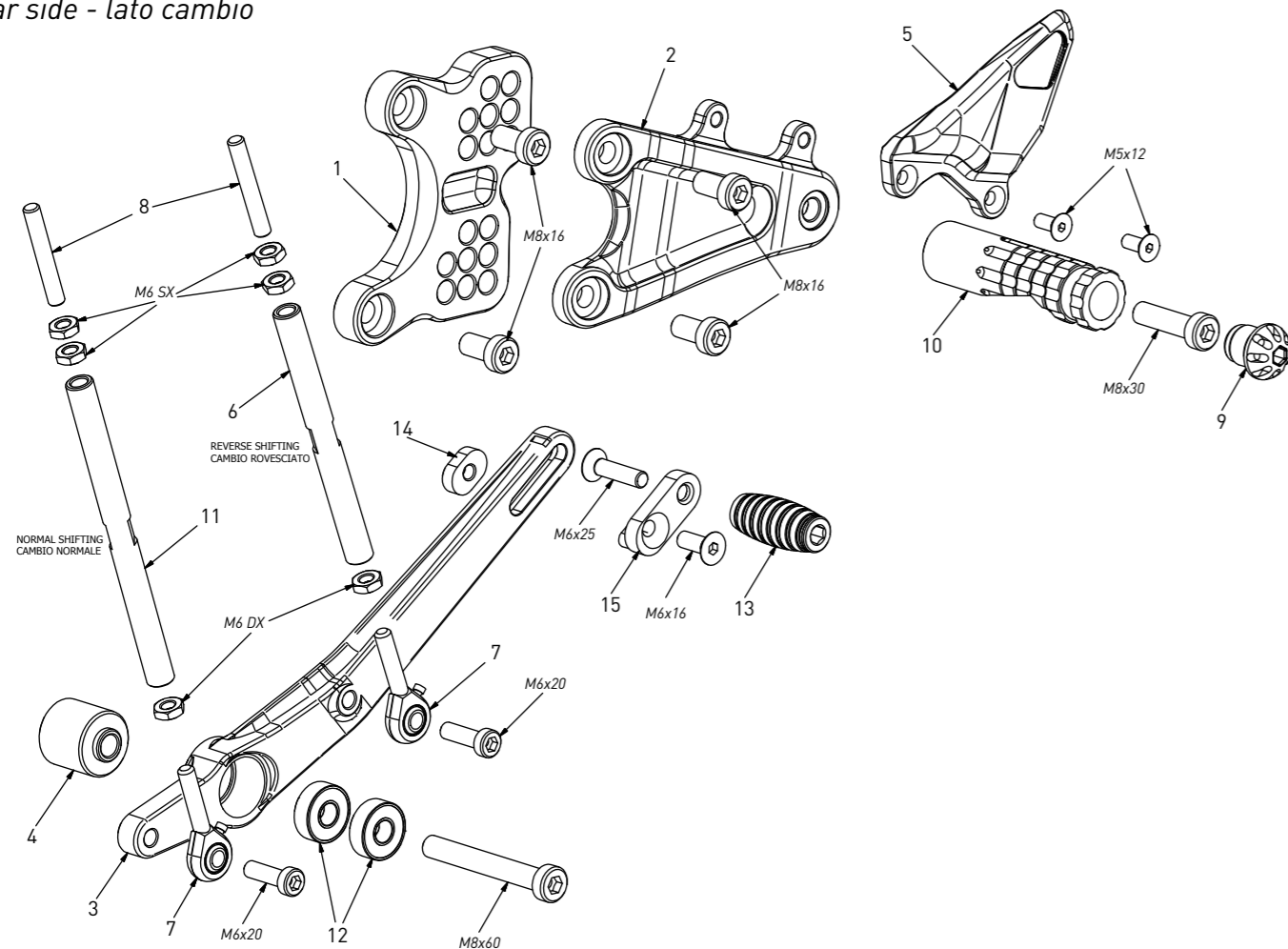
brake side - lato freno



code H016 - brake side - lato freno		
n°	description - descrizione	code
1	back plate - arretratore	AR_142
2	plate - piastra	PS_073
3	brake lever - leva freno	FN_039
4	bush - boccola	BC_002
5	brake pin - perno freno	PF_007
6	cap - tappo	PG00_BK
7	footpeg - poggiatesta	PG03
8	spring - molla	MO_002
9	heel plate - battitacco	BT_038B
10	bearing - cuscinetto	CS002
11	frontpeg - puntalino	PU001
12	sliding plate - piastra scorrevole	PU004
13	anchor - tassello	PU005
14	oil joint - raccordo olio	PP_029
15	oil bulb - bulbo	PP_029D
16	forelock - coppiglia	FN_001

code H016 - Honda CBR 1000 RR-R Fireblade '20/'22 "Standard"

gear side - lato cambio



code H016 - gear side - lato cambio		
n°	description - descrizione	code
1	back plate - arretratore	AR_141
2	plate - piastra	PS_072
3	gear lever - leva cambio	LC_044
4	spacer - distanziale	DC_040
5	heel plate - battitacco	BT_037
6	gear rod - asta cambio	R021_105
7	RH uniball - uniball DX	RH01_DX
8	threaded rod - barra filettata	AC01_SX
9	cap - tappo	PG00_BK
10	footpeg - poggiatesta	PG04
11	gear rod - asta cambio	R021_125
12	bearing - cuscinetto	CS003
13	frontpeg - puntalino	PU001
14	anchor - tassello	PU005
15	sliding plate - piastra scorrevole	PU004