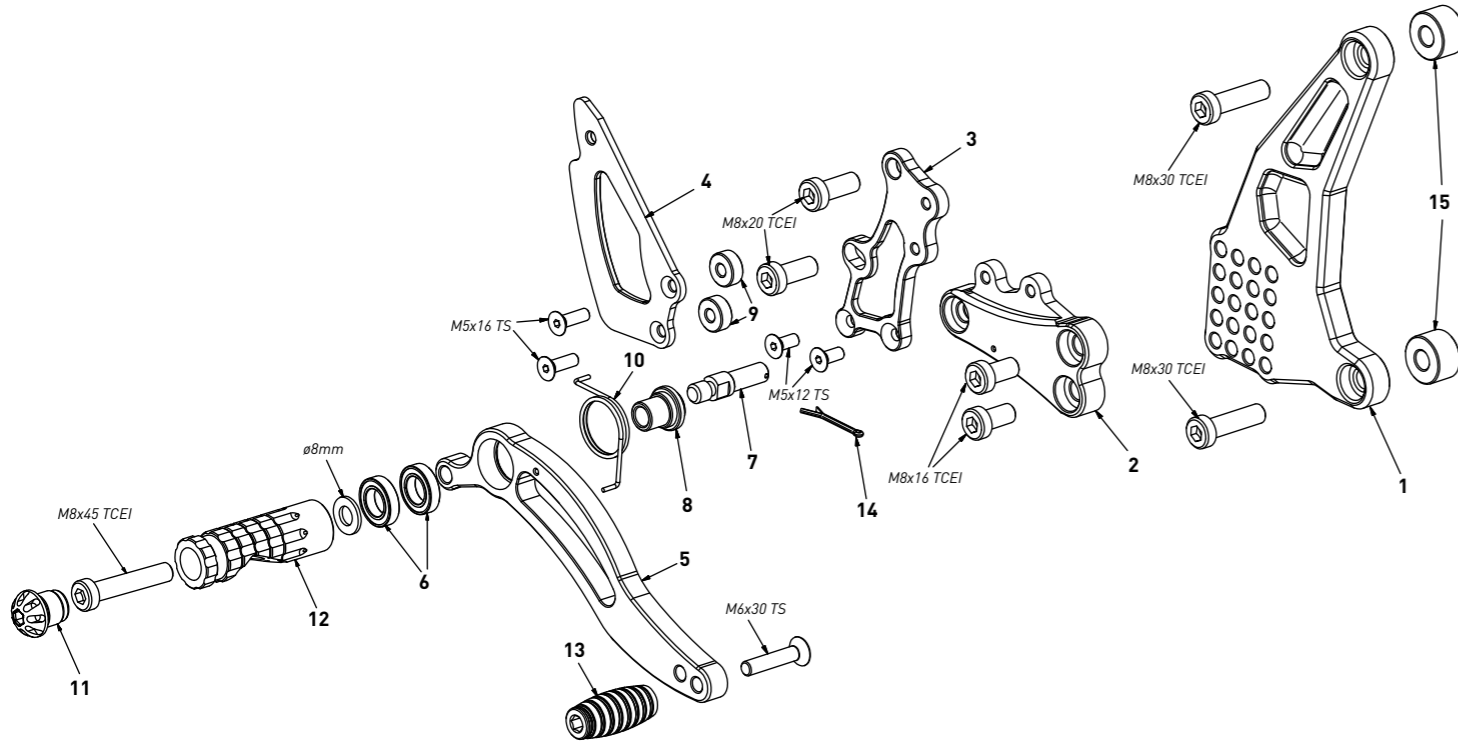


**code K007A - Kawasaki ER-6N '07/'08**

*brake side - lato freno*

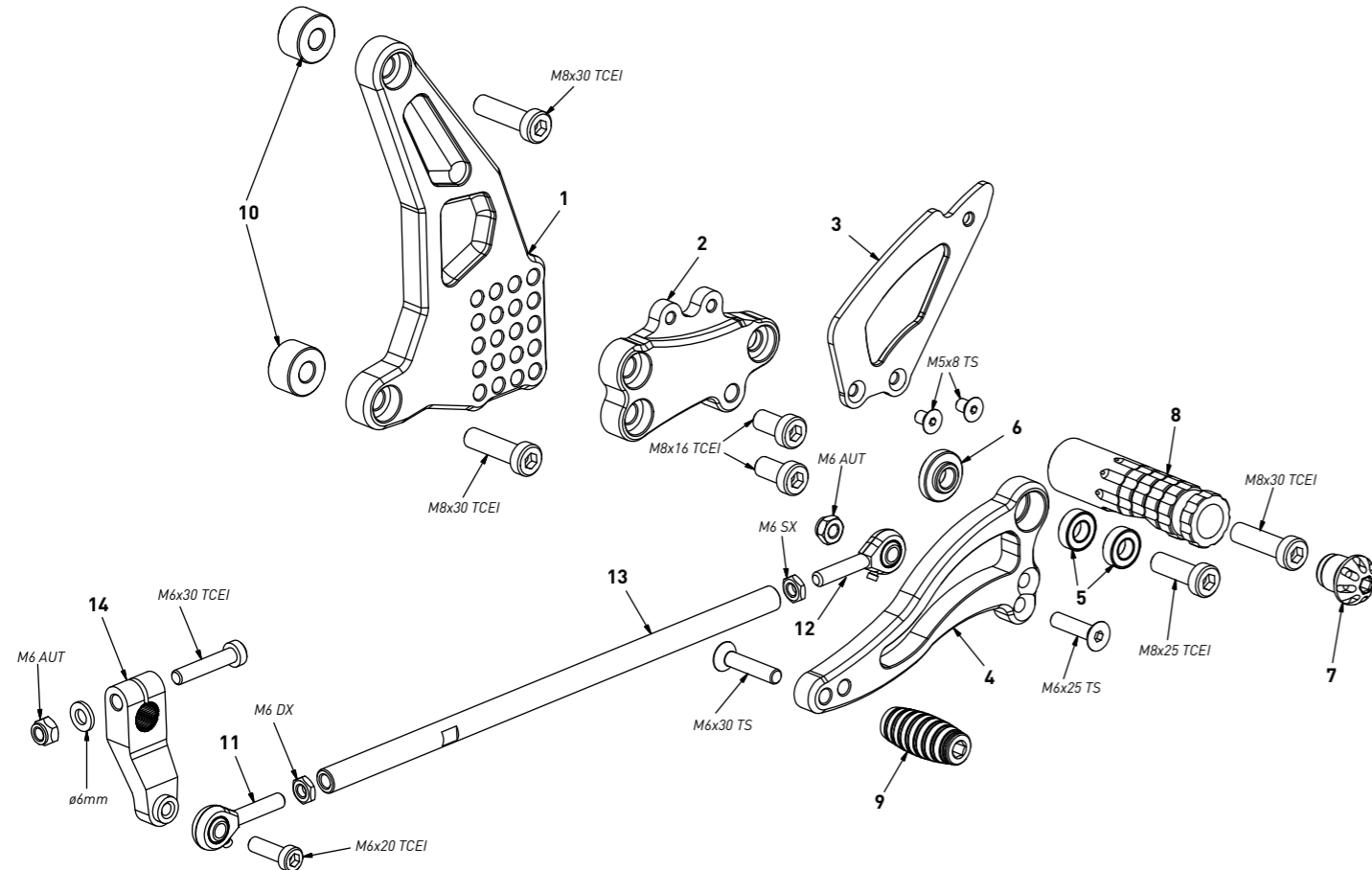


**code K007A - brake side - lato freno**

n°	description - descrizione	code
1	back plate - arretratore	AR_132A
2	plate - piastra	PS_008T
3	pump support - portapompa	PP_013
4	heel plate - battitacco	BT_002
5	brake lever - leva freno	FN_002
6	bearing - cuscinetto	CS002
7	brake pin - perno freno	PF_005
8	bush - boccola	BC_002
9	6mm spacer - spessore 6mm	SP_002
10	spring - molla	MO_002
11	cap - tappo	PG00_BK
12	footpeg - poggia piede	PG03
13	frontpeg - puntalino	PU_001
14	forelock - coppiglia	FN_001
15	12mm spacer - spessore 12mm	SP_009

**code K007A - Kawasaki ER-6N '07/'08**

*gear side - lato cambio*



**code K007A - gear side - lato cambio**

n°	description - descrizione	code
1	back plate - arretratore	AR_131
2	plate - piastra	PS_009T
3	heel plate - battitacco	BT_002
4	gear lever - leva cambio	LC_007
5	bearing - cuscinetto	CS001
6	bush - boccola	BC_001
7	cap - tappo	PG00_BK
8	footpeg - poggia piede	PG04
9	frontpeg - puntalino	PU_001
10	12mm spacer - spessore 12mm	SP_009
11	RH uniball - uniball DX	RH01_DX
12	LH uniball - uniball SX	RH01_SX
13	gear rod - asta cambio	R021_240
14	gear selector - selettore	SC_001