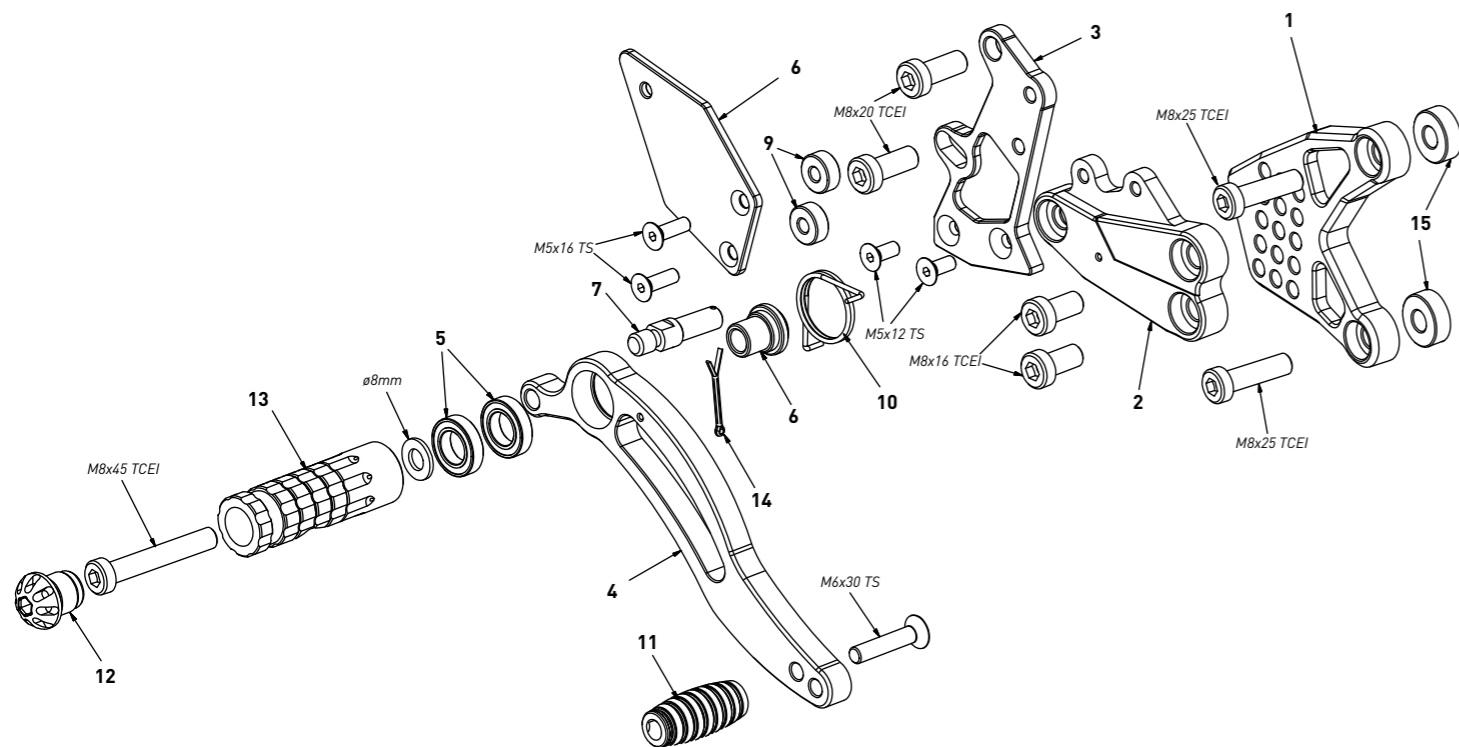


**code K012 - Kawasaki ZX-10R '11/'15**

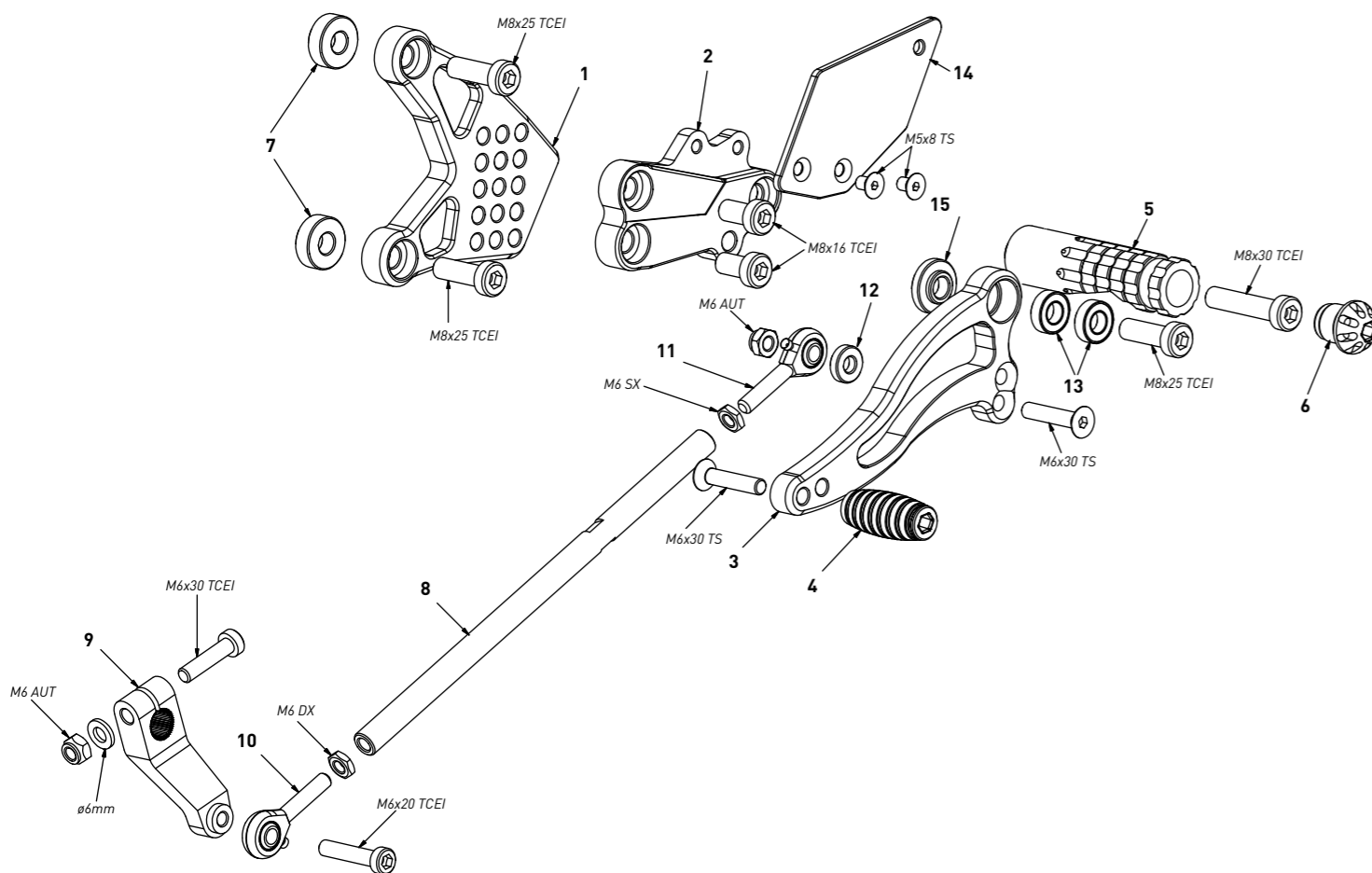
*brake side - lato freno*



code K012 - brake side - lato freno		
n°	description - descrizione	code
1	back plate - arretratore	AR_048
2	plate - piastra	PS_014T
3	pump support - portapompa	PP_019
4	brake lever - leva freno	FN_002
5	bearing - cuscinetto	CS002
6	bush - boccola	BC_002
7	brake pin - perno freno	PF_006
8	heel plate - battitacco	BT_007
9	6mm spacer - spessore 6mm	SP_002
10	spring - molla	MO_002
11	frontpeg - puntalino	PU_001
12	cap - tappo	PG00_BK
13	footpeg - poggiatesta	PG03
14	forelock - coppiglia	FN_001
15	7mm spacer - spessore 7mm	SP_006

**code K012 - Kawasaki ZX-10R '11/'15**

*gear side - lato cambio*



code K012 - gear side - lato cambio		
n°	description - descrizione	code
1	back plate - arretratore	AR_047
2	plate - piastra	PS_015T
3	gear lever - leva cambio	LC_007
4	frontpeg - puntalino	PU_001
5	footpeg - poggiatesta	PG04
6	cap - tappo	PG00_BK
7	7mm spacer - spessore 7mm	SP_006
8	gear rod - asta cambio	R021_200
9	gear selector - selettore	SC_001
10	RH uniball - uniball DX	RH01_DX
11	LH uniball - uniball SX	RH01_SX
12	4mm spacer - spessore 4mm	SP_004
13	bearing - cuscinetto	CS001
14	heel plate - battitacco	BT_008
15	bush - boccola	BC_001