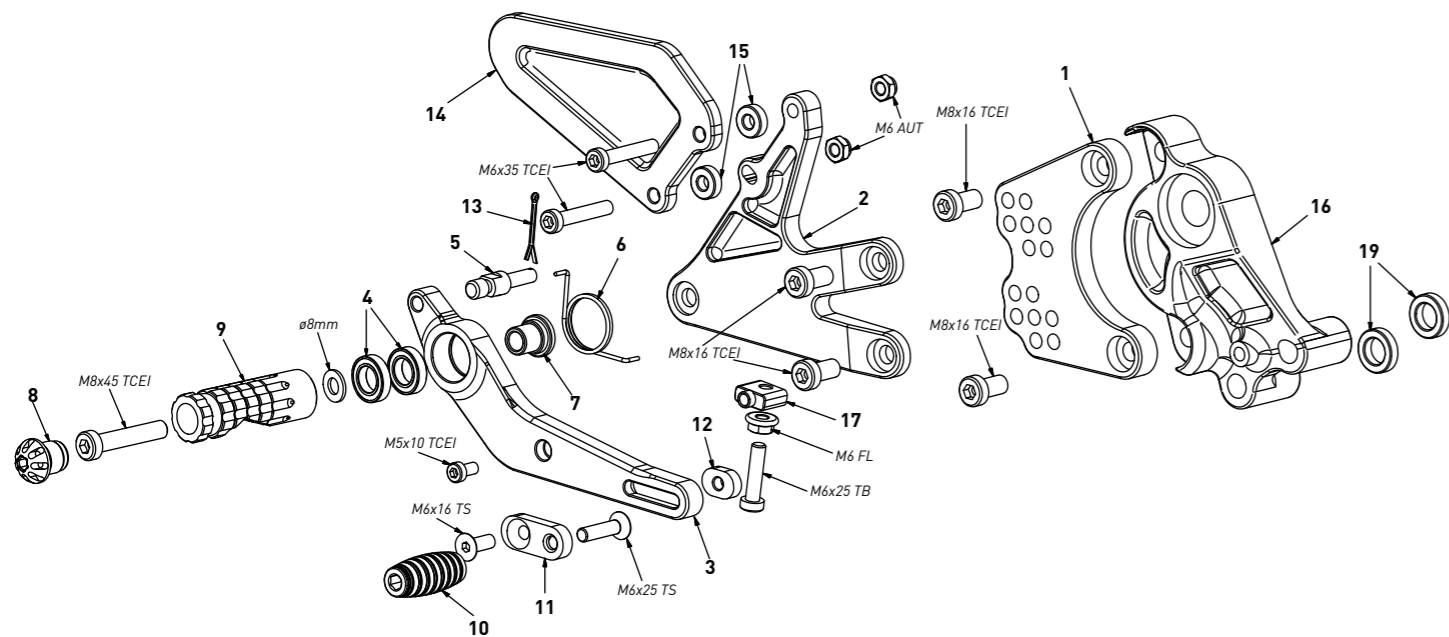


code KT01 - KTM RC125/200/250/390 '14/'20

brake side - lato freno

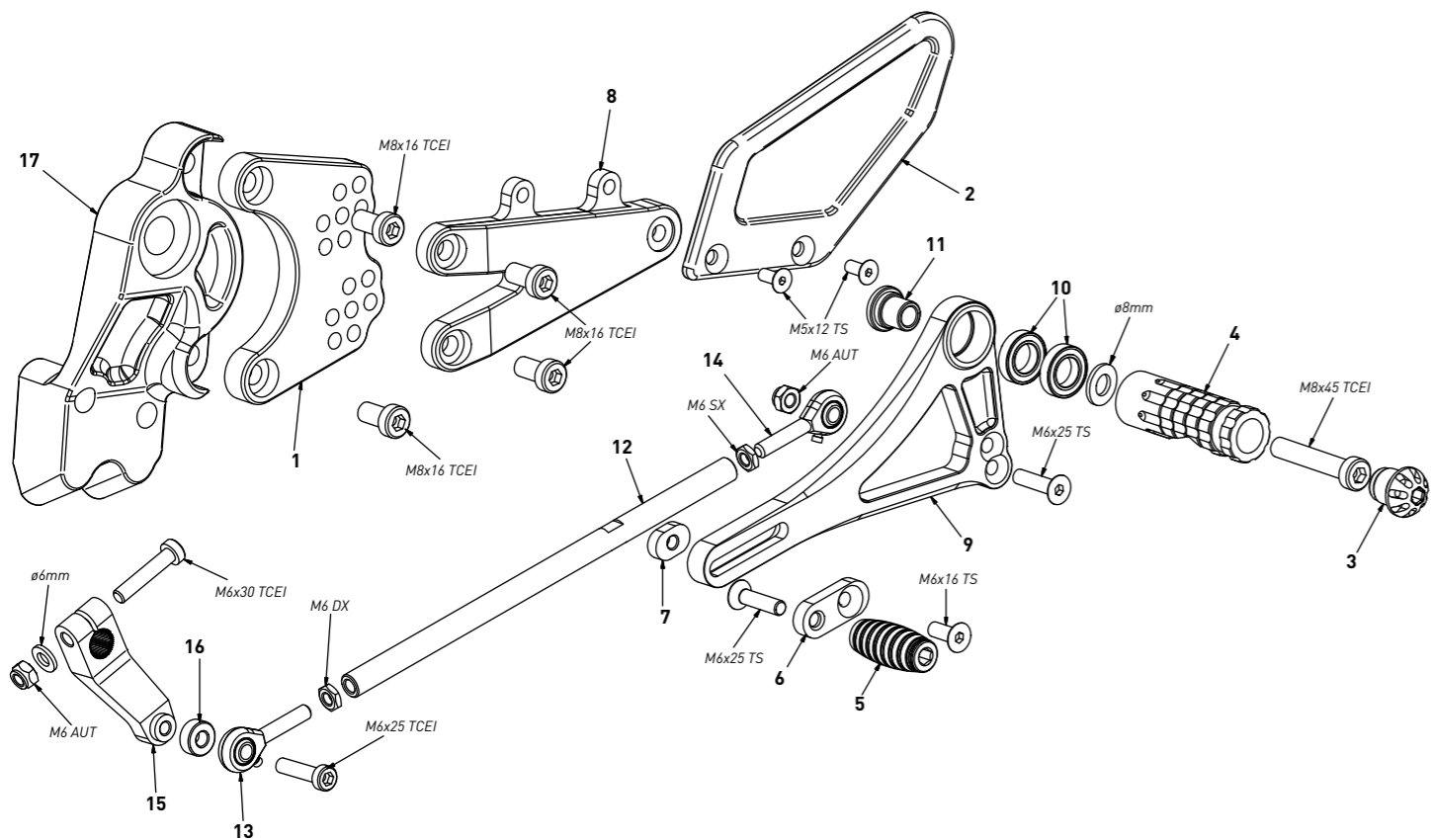


code KT01 - brake side - lato freno

n°	description - descrizione	code
1	back plate - arretratore	AR_092B
2	plate - piastra	PS_044
3	brake lever - leva freno	FN_024
4	bearing - cuscinetto	CS002
5	brake pin - perno freno	PF_003
6	spring - molla	MO_002
7	bush - boccia	BC_002
8	cap - tappo	PG00_BK
9	footpeg - poggipiede	PG03
10	frontpeg - puntalino	PU_001
11	sliding plate - piastra scorrevole	PU_004
12	anchor - tassello	PU_005
13	forelock - coppiglia	FN_001
14	heelplate - battitacco	BT_025
15	5mm spacer - spessore 5mm	SP_022
16	chassis plate - piastra telaio	PS_054
17	adjuster - registro	FN_025
18	adjuster screw - vite registro	FN_014
19	5mm spacer - spessore 5mm	SP_027

code KT01 - KTM RC125/200/250/390 '14/'20

gear side - lato cambio



code KT01 - gear side - lato cambio

n°	description - descrizione	code
1	back plate - arretratore	AR_091
2	heel plate - battitacco	BT_024
3	cap - tappo	PG00_BK
4	footpeg - poggipiede	PG03
5	frontpeg - puntalino	PU_001
6	sliding plate - piastra scorrevole	PU_004
7	anchor - tassello	PU_005
8	plate - piastra	PS_045
9	gear lever - leva cambio	LC_032
10	bearing - cuscinetto	CS002
11	bush - boccia	BC_002
12	gear rod - asta cambio	R021_205
13	RH uniball - uniball DX	RH01_DX
14	LH uniball - uniball SX	RH01_SX
15	gear selector - selettore	SC_002
16	6mm spacer - spessore 6mm	SP_015
17	chassis plate - piastra telaio	PS_053