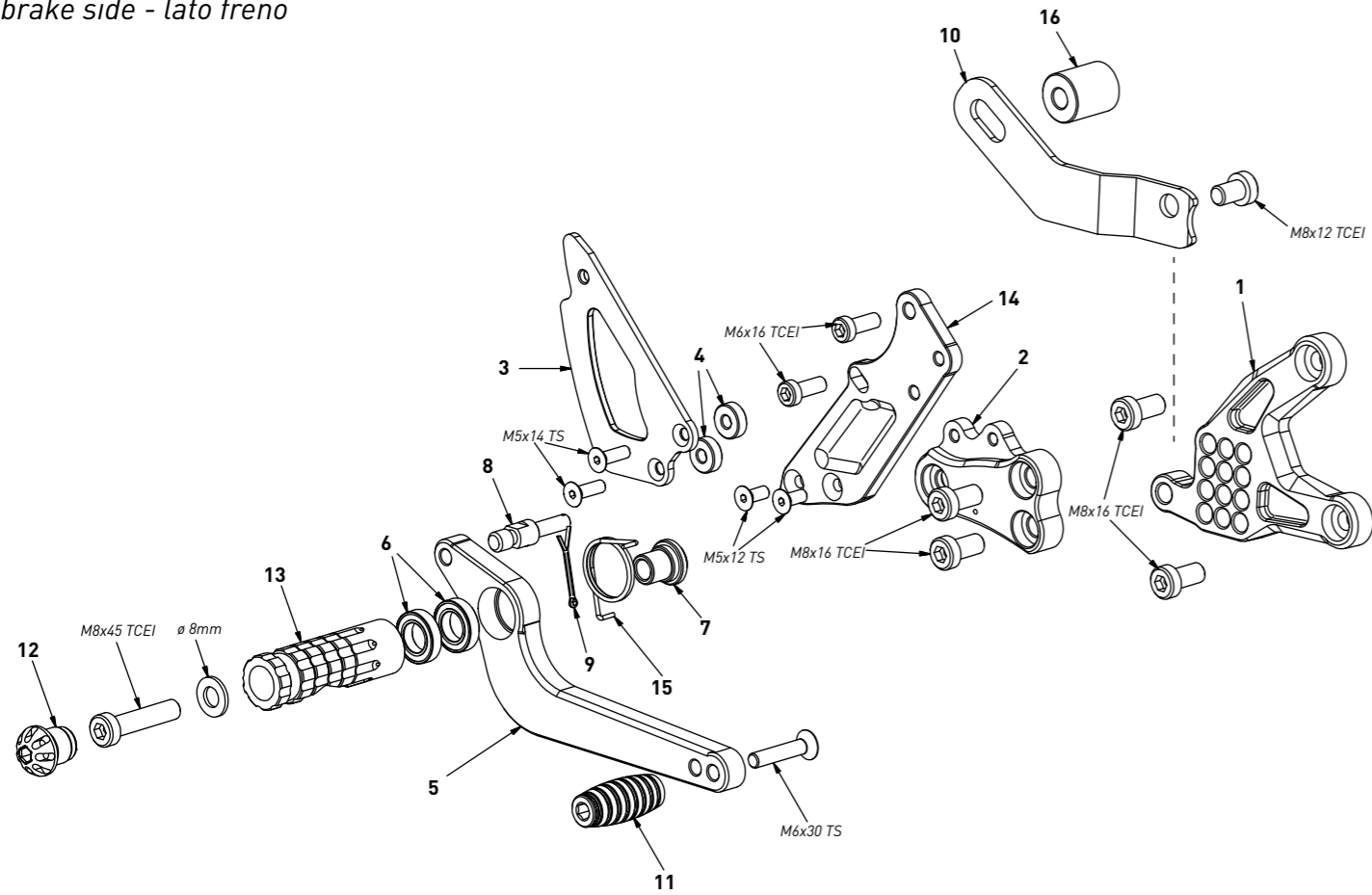


code S013 - Suzuki GSX-S 1000 '21/'22

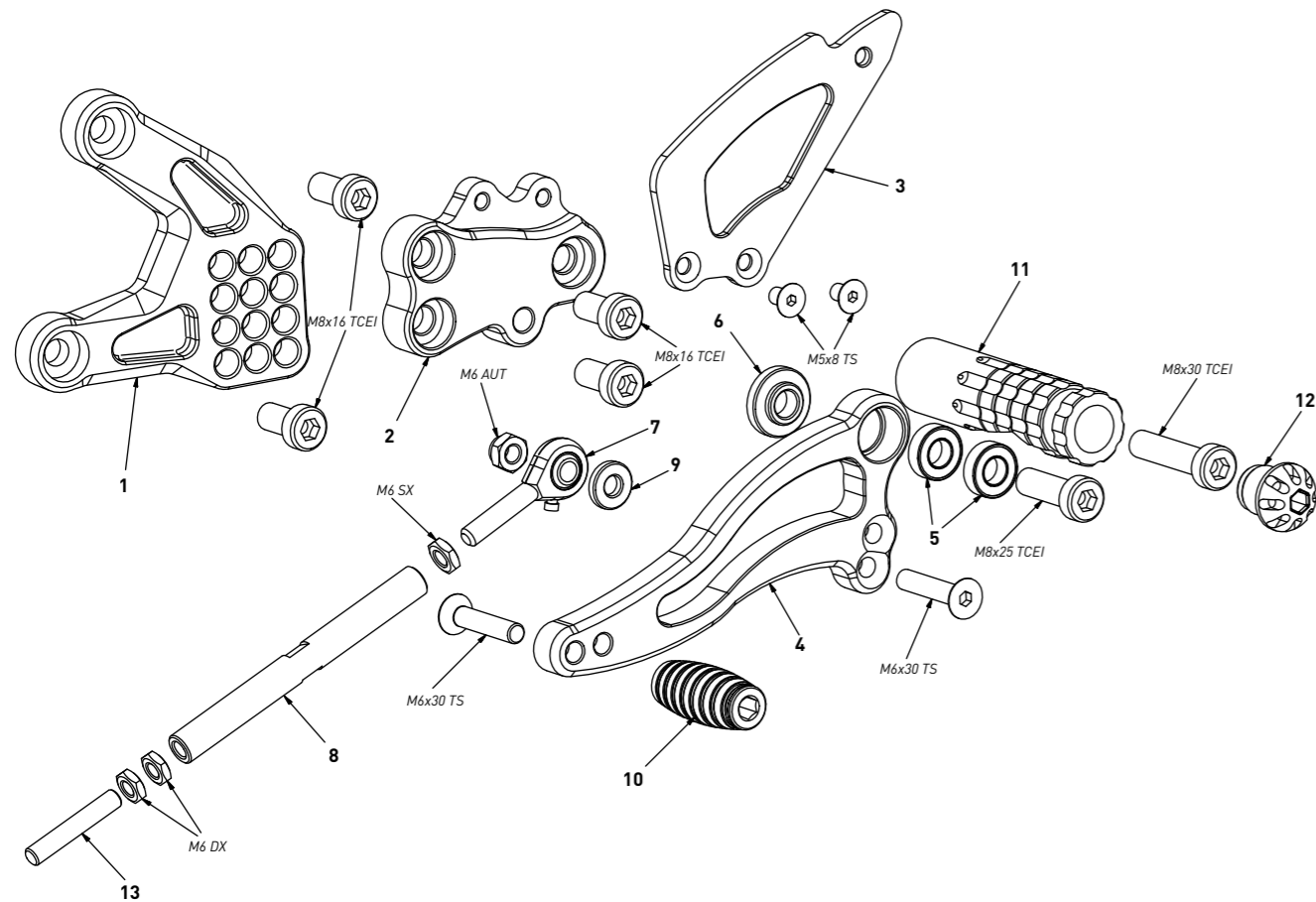
brake side - lato freno



code S013 - brake side - lato freno		
n°	description - descrizione	code
1	back plate - arretratore	AR_150
2	plate - piastra	PS_012T
3	heelplate - battitacco	BT_001
4	5mm spacer - spessore 5mm	SP_001
5	brake lever - leva freno	FN_015
6	bearing - cuscinetto	CS002
7	bush - boccola	BC_002
8	brake pin - perno freno	PF_003
9	forelock - coppiglia	FN_001
10	exhaust bracket - staffa scarico	SS_017
11	frontpeg - puntalino	PU_001
12	cap - tappo	PG00_BK
13	footpeg - poggiatesta	PG03
14	pump support - portapompa	PP_022
15	spring - molla	MO_002
16	24mm spacer - spessore 24mm	SP_031

code S013 - Suzuki GSX-S 1000 '21/'22

gear side - lato cambio



code S013 - gear side - lato cambio		
n°	description - descrizione	code
1	back plate - arretratore	AR_149
2	plate - piastra	PS_025T
3	heelplate - battitacco	BT_002
4	gear lever - leva cambio	LC_007
5	bearing - cuscinetto	CS001
6	bush - boccola	BC_001
7	LH uniball - uniball SX	RH01_SX
8	gear rod - asta cambio	R021_110
9	4mm spacer - spessore 4mm	SP_004
10	frontpeg - puntalino	PU_001
11	footpeg - poggiatesta	PG04
12	cap - tappo	PG00_BK
13	RH threaded rod - barra DX	AC01_DX