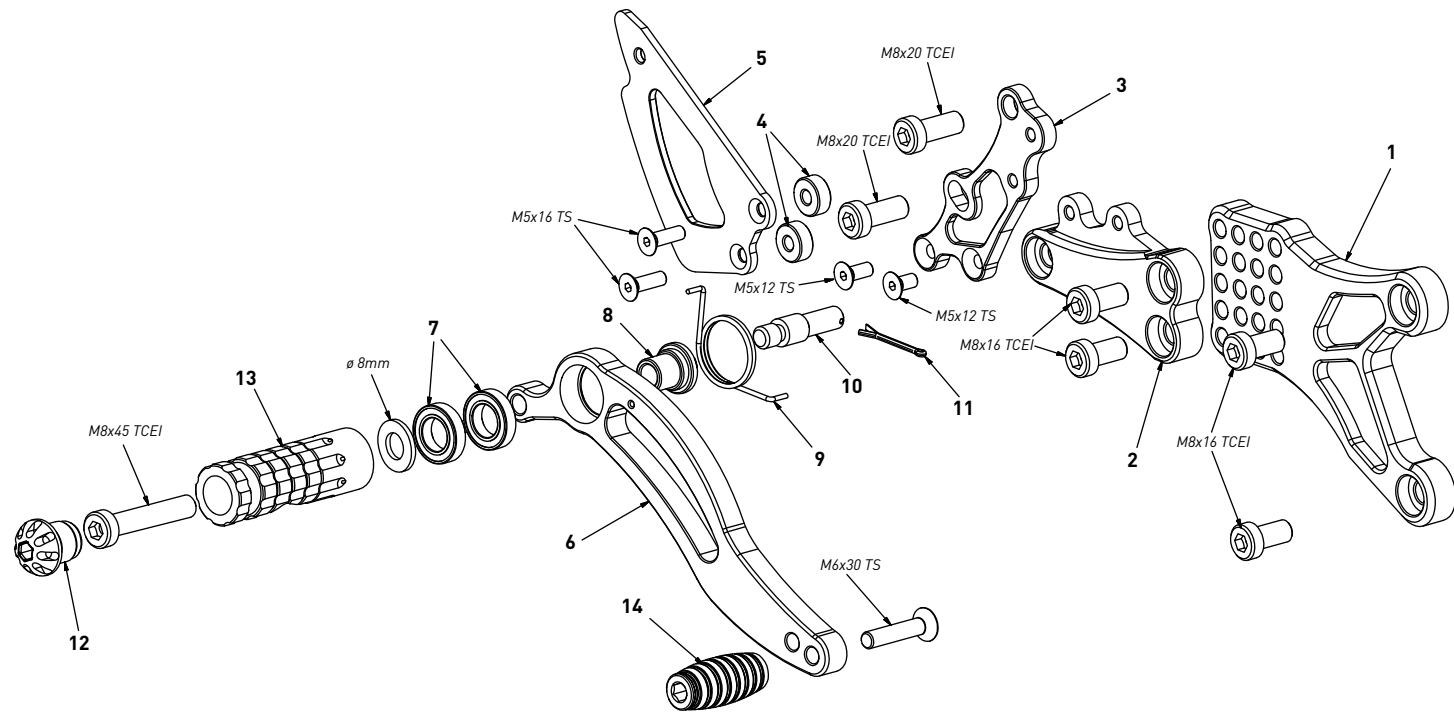


code TH01 Triumph Daytona 675/Street Triple 675 '06/'12

brake side - lato freno

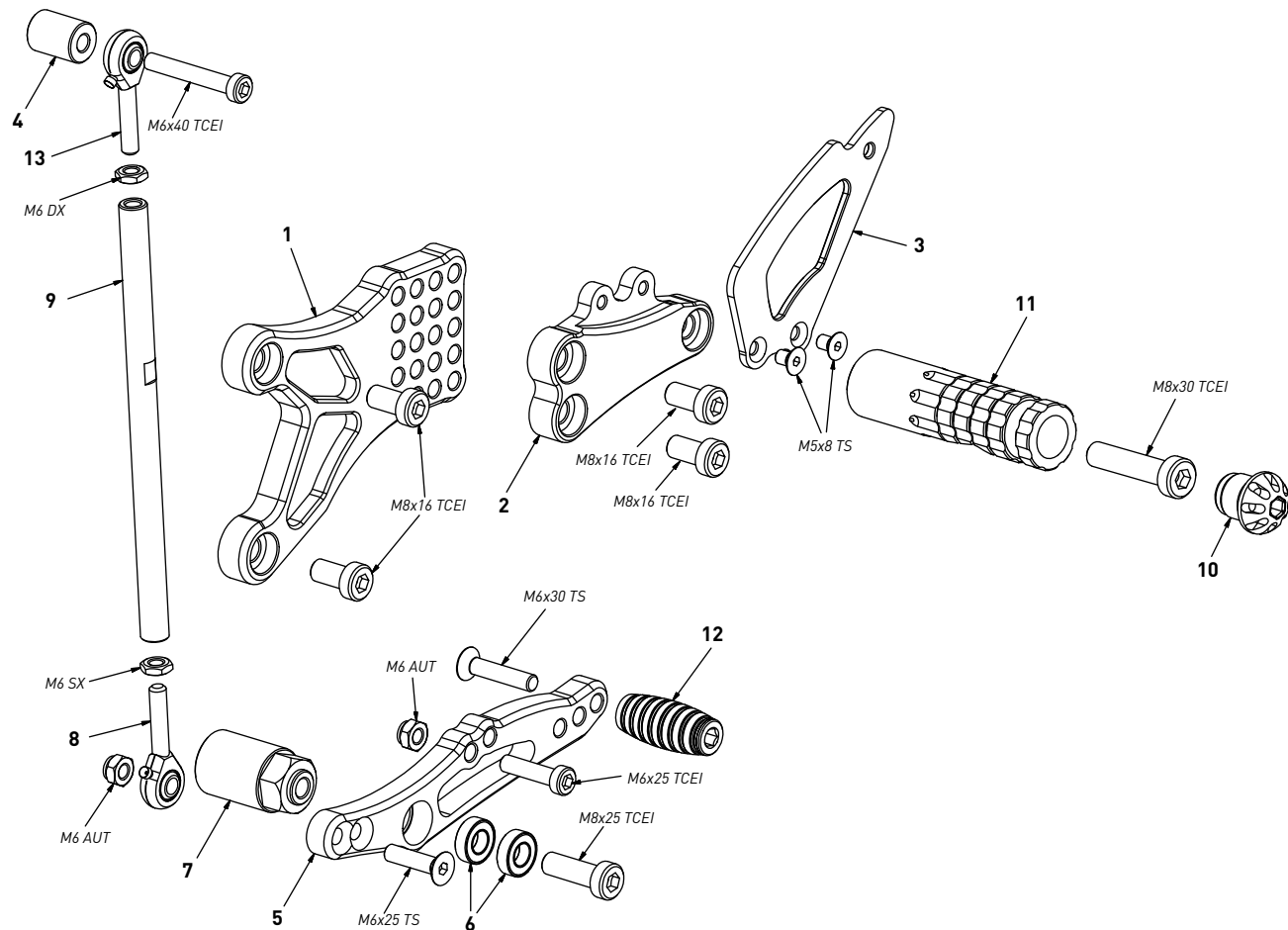


code TH01 - brake side - lato freno

n°	description - descrizione	code
1	back plate - arretratore	AR_014
2	plate - piastra	PS_008T
3	pump support - portapompa	PP_014
4	6mm spacer - spessore 6mm	SP_002
5	heelplate - battitacco	BT_001
6	brake lever - leva freno	FN_002
7	bearing - cuscinetto	CS002
8	bush - boccia	BC_002
9	spring - molla	MO_002
10	gear pin - perno freno	PF_001
11	forelock - coppiglia	FN_001
12	cap - tappo	PG00_BK
13	footpeg - poggiatesta	PG03
14	frontpeg - puntalino	PU_001

code TH01 Triumph Daytona 675/Street Triple 675 '06/'12

gear side - lato cambio



code TH01 - gear side - lato cambio

n°	description - descrizione	code
1	back plate - arretratore	AR_013
2	plate - piastra	PS_007T
3	heelplate - battitacco	BT_002
4	spacer - spessore	DC_015
5	gear lever - leva cambio	LC_029
6	bearing - cuscinetto	CS001
7	gear spacer - distanziale	DC_005
8	LH uniball - uniball SX	RH01_SX
9	gear rod - asta cambio	R021_165
10	cap - tappo	PG00_BK
11	footpeg - poggiatesta	PG04
12	frontpeg - puntalino	PU_001
13	RH uniball - uniball DX	RH01_DX