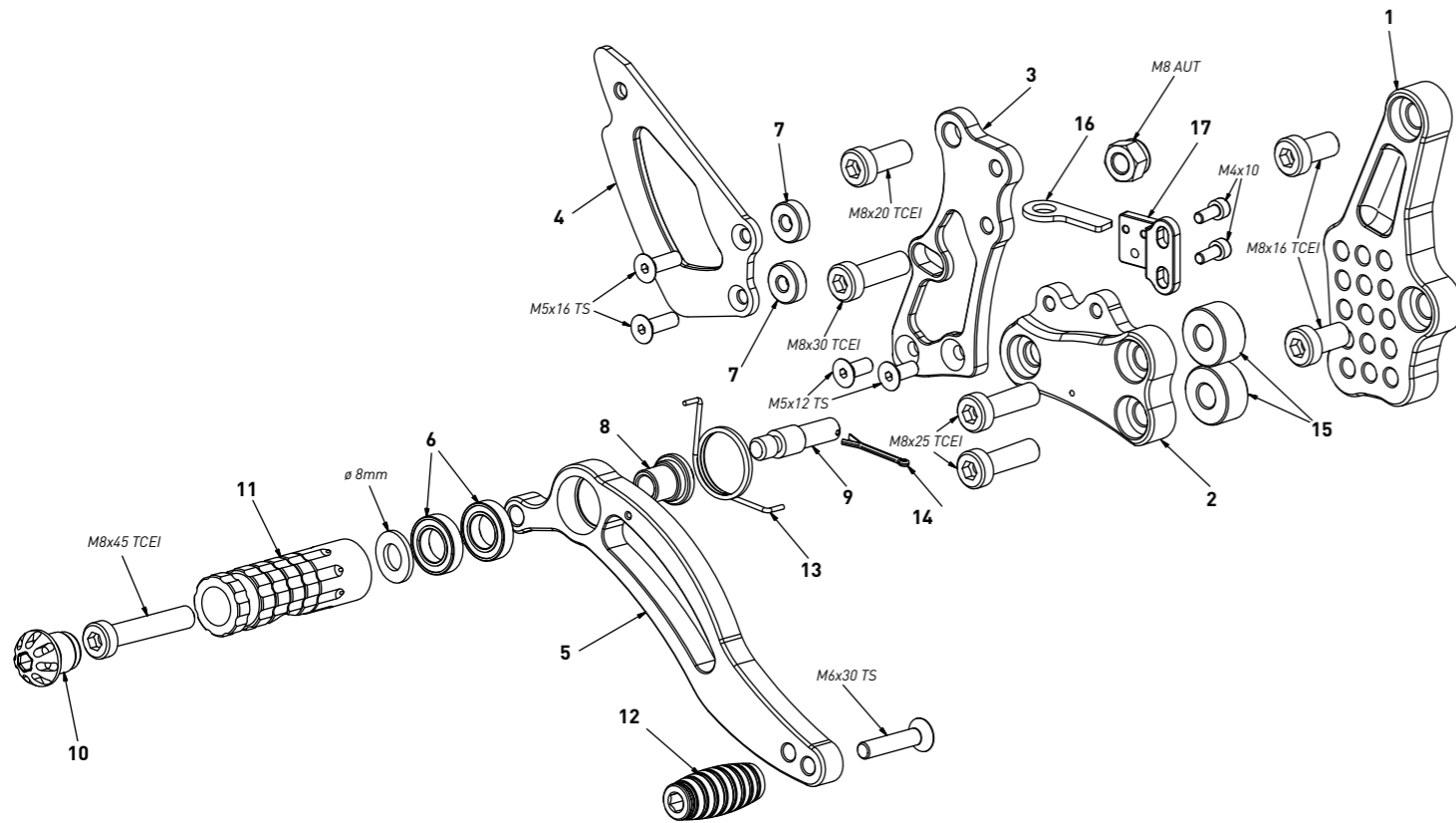


**code TH05 - Triumph Speed Triple 1050 '11/'20 (normal shifting)**

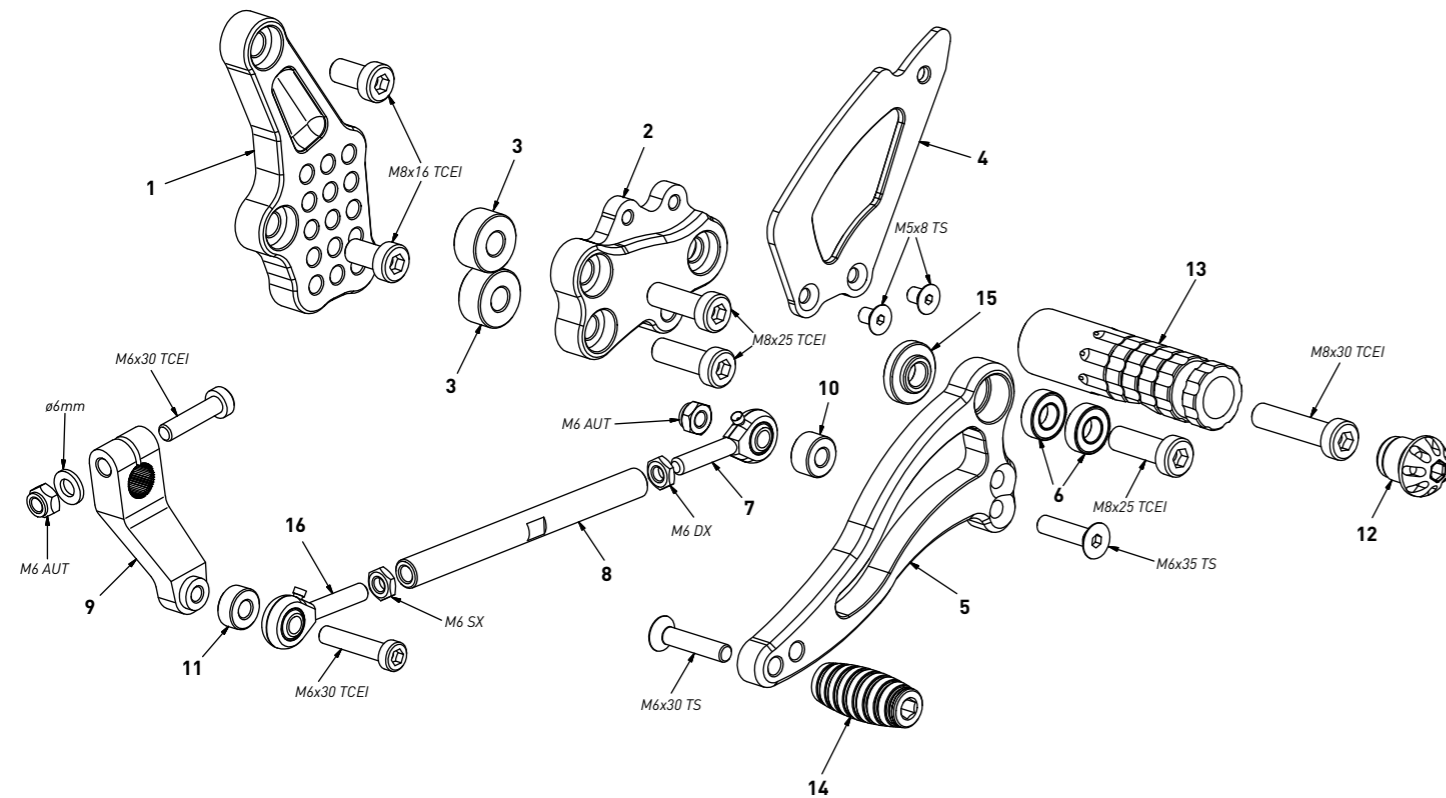
*brake side - lato freno*



code TH05 - brake side - lato freno		
n°	description - descrizione	code
1	back plate - arretratore	AR_086
2	plate - piastra	PS_012BT
3	pump support - portapompa	PP_020
4	heelplate - battitacco	BT_002
5	brake lever - leva freno	FN_002
6	bearing - cuscinetto	CS002
7	6mm spacer - spessore 6mm	SP_002
8	bush - boccola	BC_002
9	brake pin - perno freno	PF_001
10	cap - tappo	PG00_BK
11	footpeg - poggiatesta	PG03
12	frontpeg - puntalino	PU_001
13	spring - molla	MO_002
14	forelock - coppiglia	FN_001
15	10mm spacer - spessore 10mm	SP_008
16	pin bracket - staffa perno	PP_020B
17	switch support - supporto switch	PP_020C

**code TH05 - Triumph Speed Triple 1050 '11/'20 (normal shifting)**

*gear side - lato cambio*



code TH05 - gear side - lato cambio		
n°	description - descrizione	code
1	back plate - arretratore	AR_085
2	plate - piastra	PS_025T
3	10mm spacer - spessore 10mm	SP_008
4	heelplate - battitacco	BT_002
5	gear lever - leva cambio	LC_007
6	bearing - cuscinetto	CS001
7	RH uniball - uniball DX	RH01_DX
8	gear rod - asta cambio	R021_110
9	gear selector - selettore	SC_002
10	6mm spacer - spessore 6mm	SP_015
11	4mm spacer - spessore 4mm	SP_004
12	cap - tappo	PG00_BK
13	footpeg - poggiatesta	PG04
14	frontpeg - puntalino	PU_001
15	bush - boccola	BC_001
16	LH uniball - uniball SX	RH01_SX