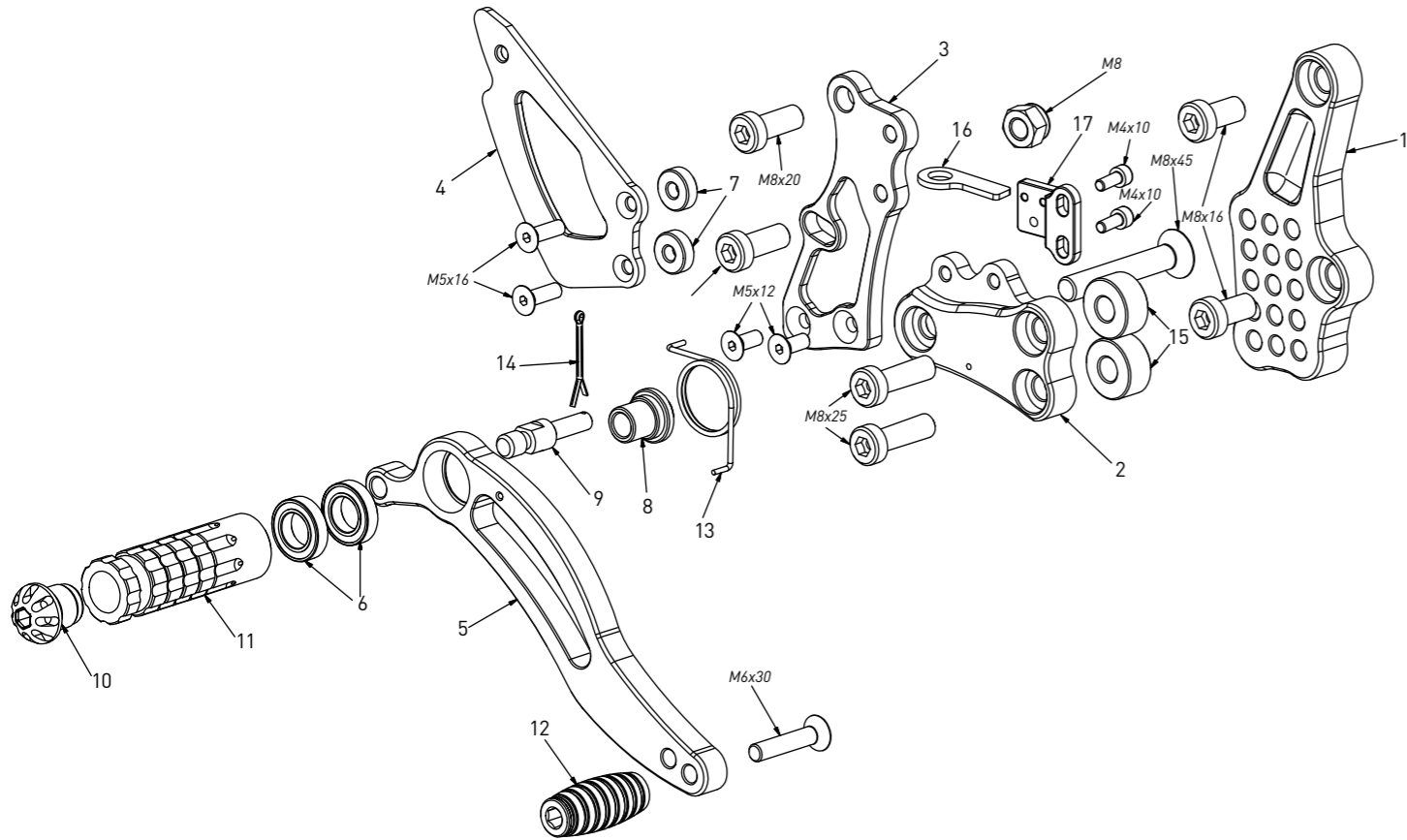


code TH05R - Triumph Speed Triple 1050 '11/'20 (reverse shifting)

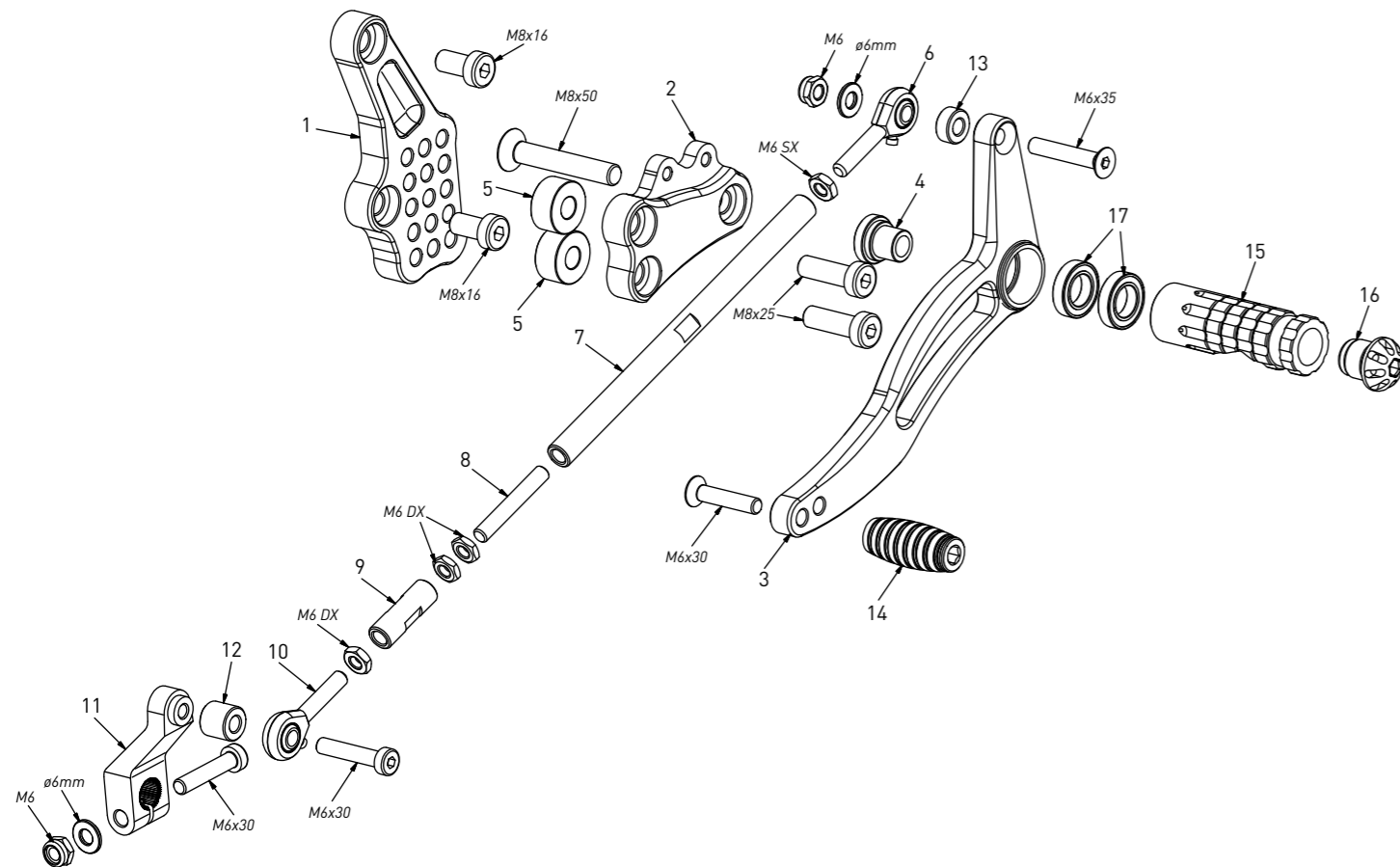
brake side - lato freno



code TH05R - brake side - lato freno		
n°	description - descrizione	code
1	back plate - arretratore	AR_086
2	plate - piastra	PS_012B
3	pump support - portapompa	PP_020
4	heelplate - battitacco	BT_002
5	brake lever - leva freno	FN_002
6	bearing - cuscinetto	CS002
7	6mm spacer - spessore 6mm	SP_002
8	bush - boccia	BC_002
9	brake pin - perno freno	PF_001
10	cap - tappo	PG00_BK
11	footpeg - poggiatesta	PG01
12	frontpeg - puntalino	PU_001
13	spring - molla	MO_002
14	forelock - coppiglia	FN_001
15	10mm spacer - spessore 10mm	SP_008
16	pin bracket - staffa perno	PP_020B
17	switch support - supporto switch	PP_020C

code TH05R - Triumph Speed Triple 1050 '11/'20 (reverse shifting)

gear side - lato cambio



code TH05R - gear side - lato cambio		
n°	description - descrizione	code
1	back plate - arretratore	AR_085
2	plate - piastra	PS_013
3	gear lever - leva cambio	LC_045
4	bush - boccia	BC_002
5	10mm spacer - spessore 10mm	SP_008
6	LH uniball - uniball SX	RH01_SX
7	gear rod - asta cambio	R021_152
8	RH threaded rod - barra DX	AC01_DX
9	gear rod - asta cambio	R021_30DX
10	RH uniball - uniball DX	RH01_DX
11	gear selector - selettore	SC_002
12	12mm spacer - spessore 12mm	SP_031
13	6mm spacer - spessore 6mm	SP_015
14	frontpeg - puntalino	PU001
15	footpeg - poggiatesta	PG01
16	cap - tappo	PG00_BK
17	bearing - cuscinetto	CS002